

TERRITORY IN JŪRININKŲ AV. 16 IN KLAIPĖDA

General information

- Real estate location – a territory of 0,9496 ha in Jūrinių av. 16 in Klaipėda (cadastral Nr. 2101-0008-0253)
- The territory is situated in very populous, south part area of Klaipėda City near 2 busy streets
- Multifunctional territory is suitable for commercial and residential purpose
- Jūrinių av. is one of the main Klaipėda City driveway and often used to reach international ferry service
- Detail plan of territory is approved. Land purpose - residential construction
- The territory could be developed in stages



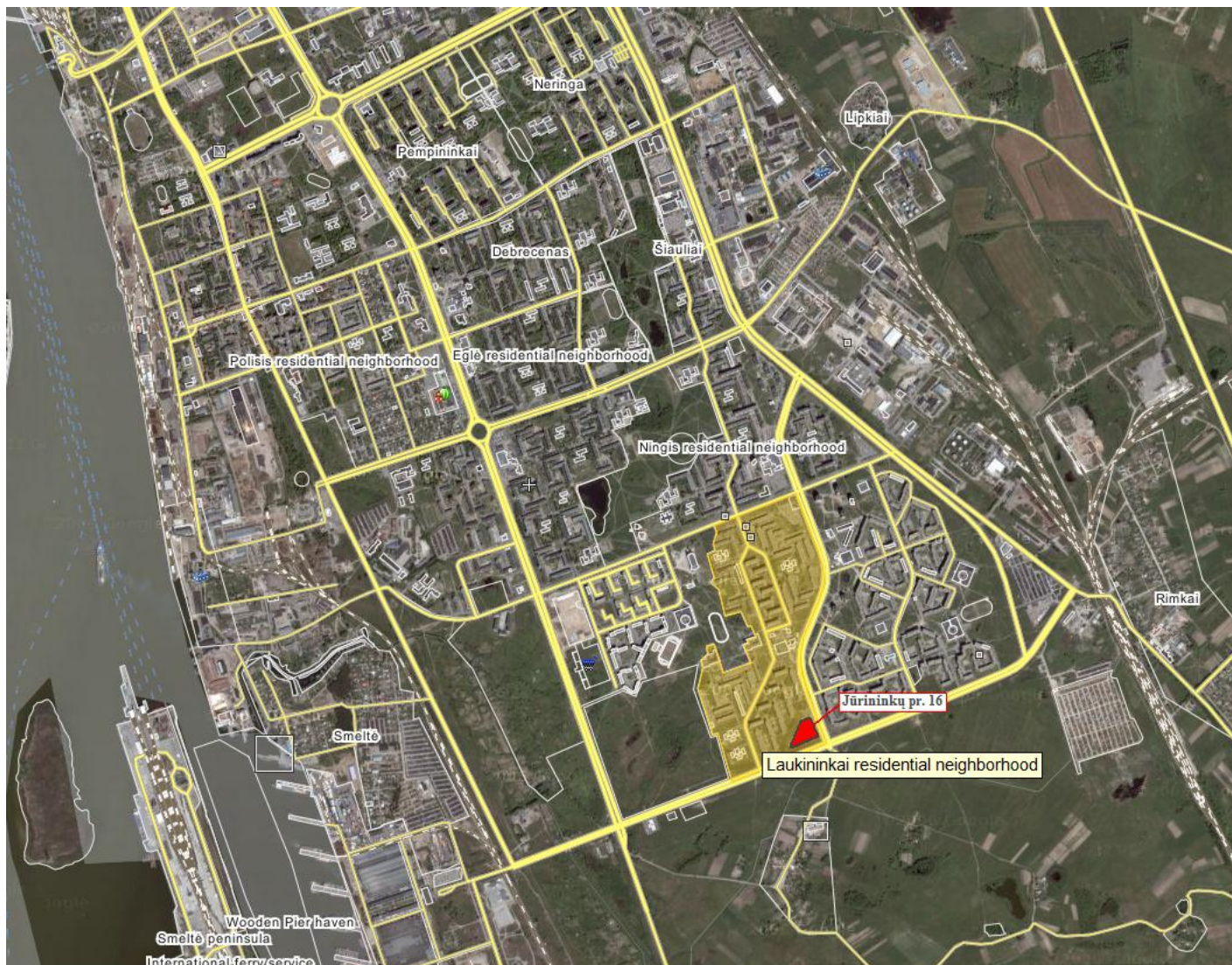
Territory Development Alternative

Parking-lot

Number of parking places	400
Monthly rent payment	100 Lt per place
Max possible revenues per year	480.000 Lt
Busyness today	About 40 %



Location:



Residential premises

Total possible building area	16.100 m ²
Maximum building height	70 m
Density of construction	100 %
Intensity of construction	170 %

Possible residential-commercial project visualization:



Commercial building

Land plot area

0,9496 ha

